

# EagleDrive™ electromagnetic pumps



The EagleDrive™ is an electromagnetic drive for Micropump pump series GA, GB, GJ, GJR, GAF and CA. This compact high performance drive, enables the pumps to address a wide range of applications. The EagleDrive™ is an innovative brushless DC motor with no moving parts for outstanding efficiency and reliability. With variable speed operation, a tachometer and error output and the forward/reverse capability, the EagleDrive™ is the right choice for many system designs.

**Small package** – The small package size, means an easily integration into most of the system designs.

**No moving parts** – Fewer parts to wear, means higher reliability and longer life with no service.

**High torque** – Higher torque offers improved flow rates with a continuous duty.

**High pump speed** – Pump speeds up to 8,000 RPM, resulting in higher flow rates.

**Wide range of power supply voltages** – Supported power supply voltages from 10 to 38V DC eases system integration.

**Digital error outputs** – Digital error outputs enable a system diagnostic functionality.

**High temperature operation** – A max ambient temperature limit of 120°C increases the allowed operation envelope.

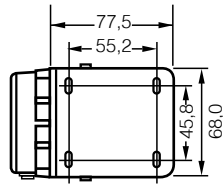
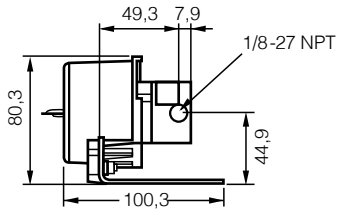
#### Industries served

- Aerospace and aircraft
- Automotive
- Biotechnology
- Electronics
- Clinical and Analytical
- Food and beverage
- Medical
- Pharmaceutical
- Paint and inks

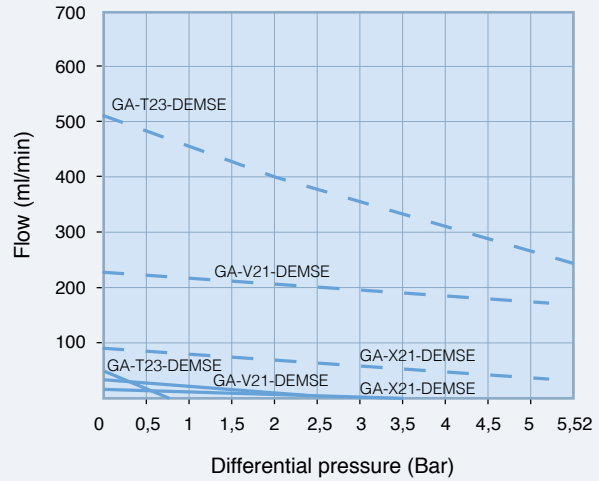
#### Main applications

- Textile printing
- Ceramic printing
- Diesel engine emission control
- Refrigerant recovery
- Fuel additive injection
- Pipeline sampling

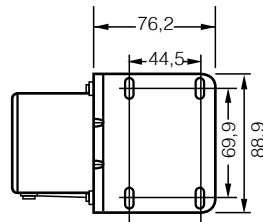
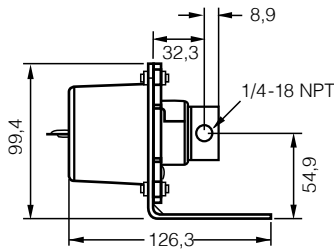
### GA - DEMSE



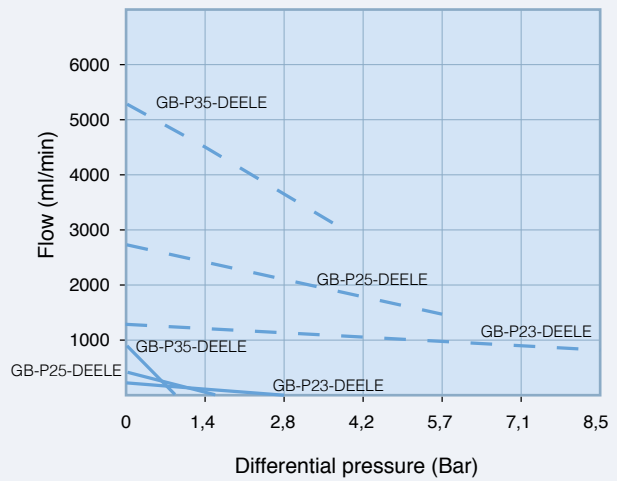
Dimensions mm.



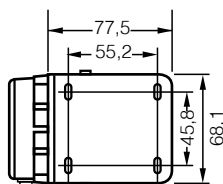
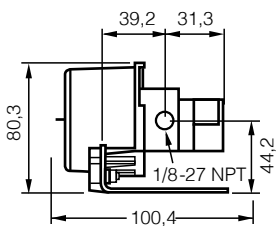
### GB - DEELE



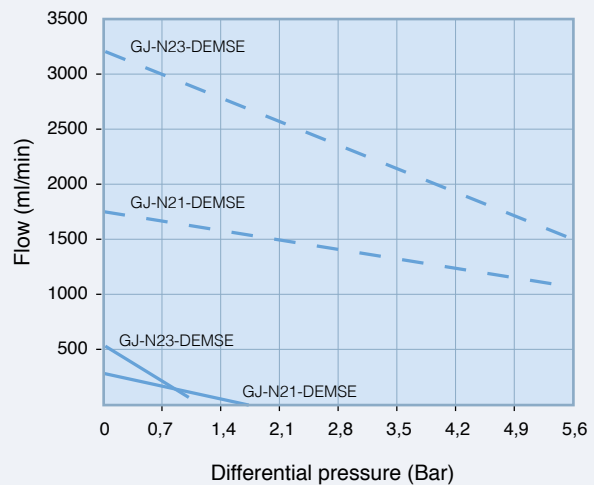
Dimensions mm.



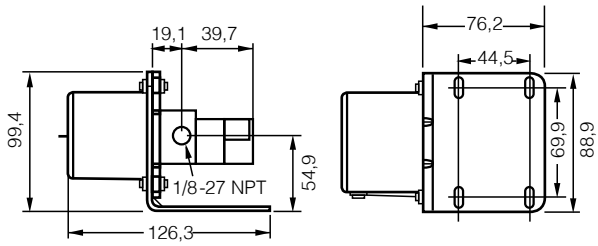
### GJ - DEMSE



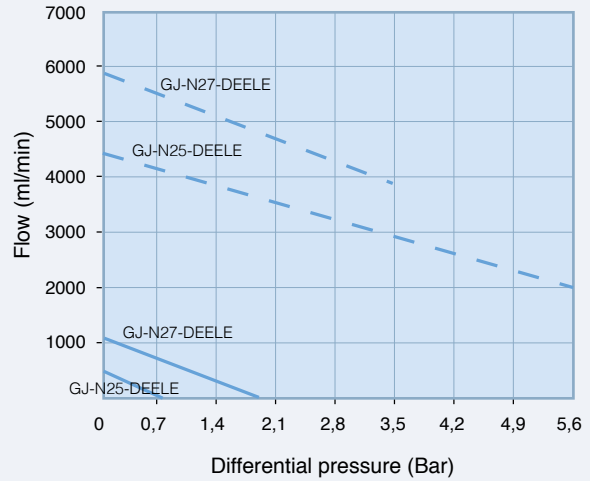
Dimensions mm.



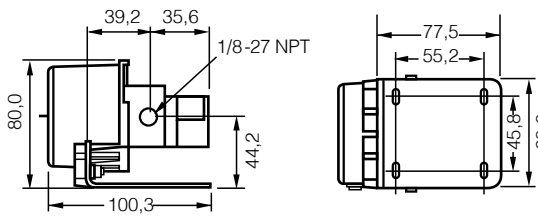
### GJ - DEELE



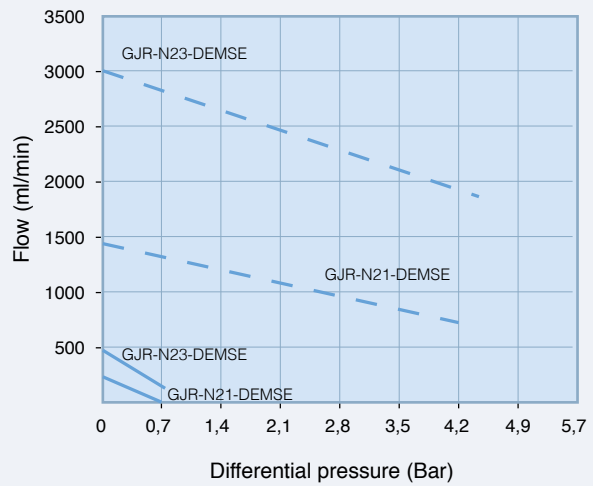
Dimensions mm.



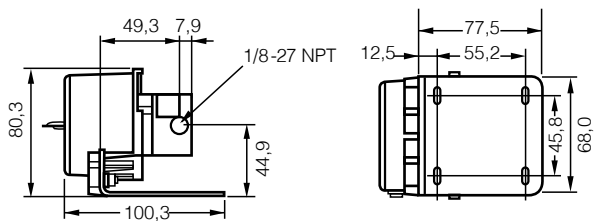
### GJR - DEMSE



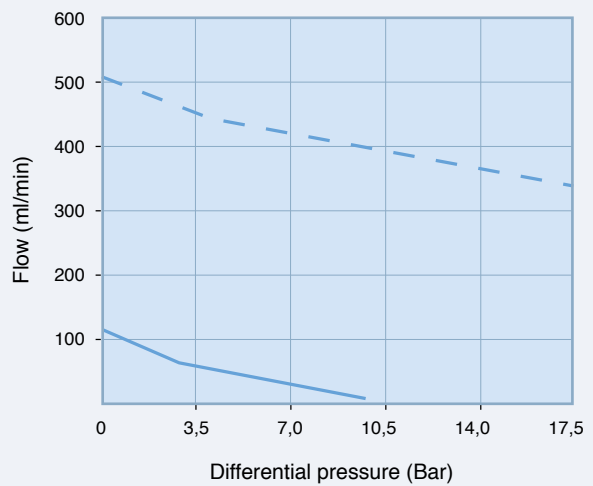
Dimensions mm.



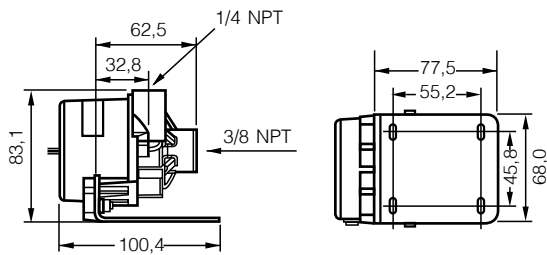
### GAF - DEMSE



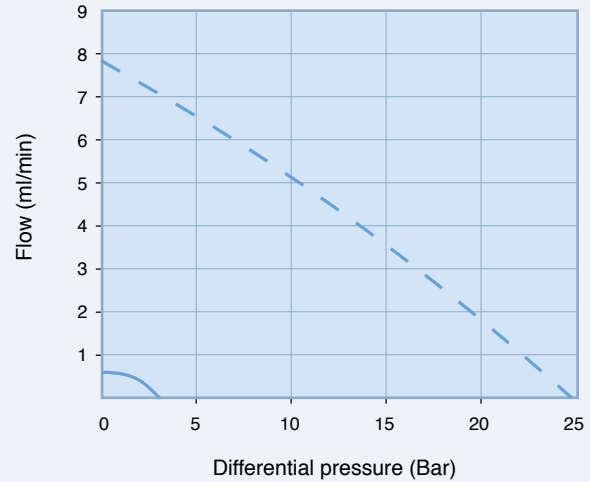
Dimensions mm.



## CA - DEMSE



Dimensions mm.



PUMP MODEL		EAGLE DRIVE MODEL	FLOW X ROUND (ml)	MAX DIFFERENTIAL PRESSURE (Bar)	MAX PRESSURE SYSTEM (Bar)	TEMPERATURE RANGE (°C)	LIQUID VISCOSITY RANGE (CPS)	SPEED RANGE (GIRI/MIN)	SUPPLY VOLTAGE RANGE (VCC)
GA	X21	DEMSE	0,017	5,6	21	-46 ÷ +120	0,2 ÷ 1,500	250/2.650 @ 12V 500/5.500 @ 24V 1.000 / 8.000 @ 36V	10 - 38
	V21		0,042						
	T23		0,092						
GAF	T23	0,092	17						
GB	P23	DEELE	0,26	8,7					
	P25		0,58	5,6					
	P35		1,17	3,2					
GJ	N21	DEMSE	0,31	5,6					
	N23		0,64						
	N25	DEELE	0,91						
	N27		1,23						
GJR	N21	DEMSE	0,29	4					
	N23		0,61						
CA		DEMSE	-	-		<= 100	250/2.650 @ 12V 500/5.500 @ 24V 1.000 / 10.000 @ 36V		